

SCHOOL WIDE POSITIVE BEHAVIOR INTERVENTION & SUPPORT

Discipline Foundation Policy – Restorative Justice

SUCCESSFUL SCHOOL CLIMATE COMMITTEE

PRESENTER: Earl R. Perkins, Assistant Superintendent
Office of Educational Services – School Operations

March 15, 2016



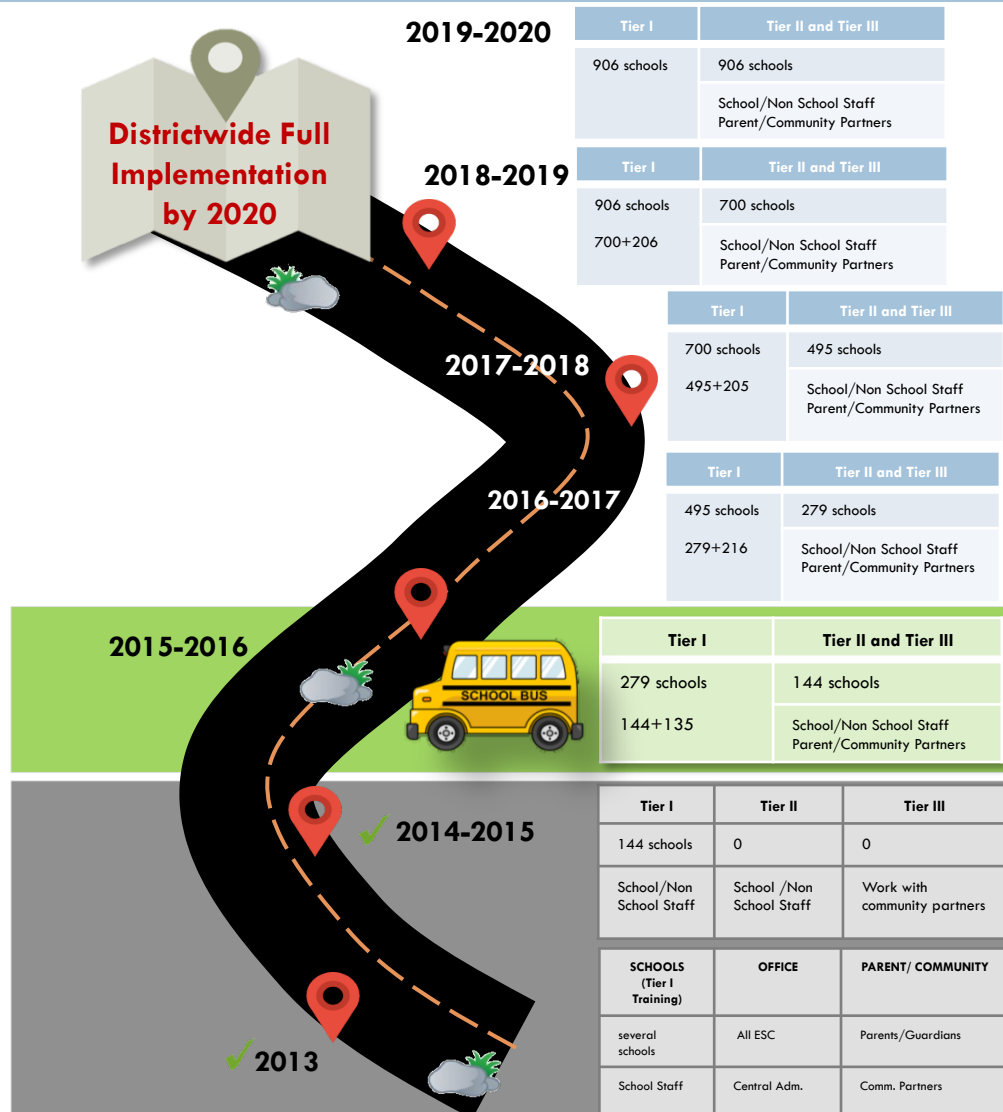
Leading by Changes in Key Discipline Policies

Division of School Operations

For the last two years now, the Office of School Operations in collaboration with various offices, schools and parents have made remarkable progress in implementing Restorative Justice practices in the 25 demonstrations schools and the identified schools each year which led to the reduction of the instructional days lost as a result of suspension.

As part of the Local Control Funding Formula (LCFF), LAUSD Office of School Operations received investment funds since 2014-2015 SY to ensure effective and fair handling of student behavior by promoting positive solutions through the reform of student discipline policies and practices. Specific goals and targets of school safety and climate are addressed.

This school year, 45 Restorative Justice Teacher Advisers have been assigned to various elementary and secondary schools where they will support implementing the Discipline Foundation Policy. In addition, staff at 423 schools have been trained in Restorative Justice practices to promote a positive school culture for all stakeholders.



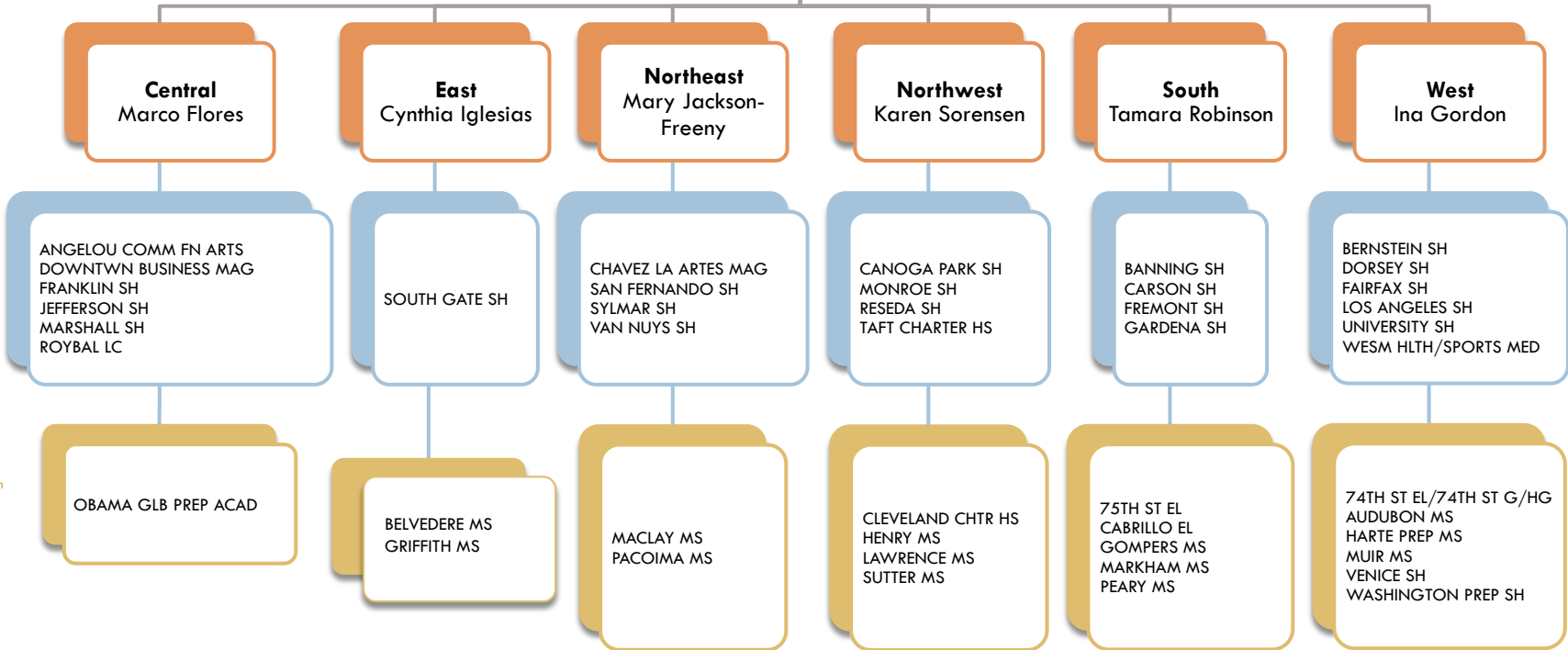


Leading by Changes in Key Discipline Policies

Division of School Operations

Thelma Melendez de Santa Ana, Ph.D., Chief Executive Officer
 Earl R. Perkins, Assistant Superintendent
 Daryl Narimatsu, Administrator of Operations, School Operations
 Deborah D. Brandy, Discipline Foundation Policy & Restorative Justice Coordinator

Selected Demonstration Schools by Organization of Local Districts



2014-2015 SY
25 Demonstration Sites
with Restorative Justice
Teacher Advisers

2015-2016 SY
Additional 20 Sites with
Restorative Justice
Teacher Advisers



Leading by Changes in Key Discipline Policies

Division of School Operations

4

Board Report:
Discipline Foundation Policy: School-Wide Positive Behavior Support
January 23, 2007

Development of a school-wide positive behavior support and discipline plan consistent with Culture of Discipline:
Guiding Principles for the School
Community and Culture of Discipline:
Student Expectations.

As of 2/2016

Following the project's plan, various tasks are ongoing to fulfill the Board Resolution requirements:

- Completed the Discipline Foundation Policy (DFP) Handbook
- SWPBIS Task Force Monthly Meetings to Monitor the Implementation of the DFP
- Monthly Meetings with Local District RJ Advisers
- Monthly Meetings with RJ Teacher Advisers
- Restorative Justice Saturday Training for Schools
- On-going Coach Support from RJ Experts
- Analyze Student Discipline Data
- Independent Auditor Visit School Sites to Review Implementation of the DFP

2014-2015

Following the project's plan, various tasks have been completed and others are ongoing to fulfill the Board Resolution requirements:

- Revised and issued Bulletin 6231.0- Discipline Foundation Policy: School-Wide Positive Behavior Intervention and Support
- Developed and published the School Climate Bill of Rights
- Collaborated with Charter Schools Division
- Augmented the role of the School-Wide Positive Behavior Intervention Support Task Force
- Selected five ESC Restorative Justice Advisers, one central office Restorative Justice Specialist and an administrative staff aide.
- Selected 25 Restorative Justice Teacher Advisers for the demonstration high schools
- Hired an independent auditor
- Hired a Restorative Justice expert trainer
- Developed an online DFP complaint system
- Provides online Student Discipline data reports published monthly on the District website
- Provided Restorative Justice training for selected schools and offices
- Established the Local Control Accountability Plan goals and metrics
- Reduced the number of the instructional days lost as a result of suspension from SY 2008 of 74,765 to 5,043 as of April 2015
- Celebrated the School Climate Awareness Month in May 2015

2015-2020

- Continue to monitor implementation of SWPBIS and Restorative Justice.
- Continue to work with SWPBIS Task Force and various District divisions including Charter School Division to fully implement the plan.
- Continue to work with community, business and philanthropic partners for schools to have access to be a full- service community school.
- Monitor the rollout of Restorative Justice to schools.
- Add additional Restorative Justice Demonstration sites with Restorative Justice Teacher Advisers assigned to each site.
- Hire additional Local district Restorative Justice Adviser to support the District's reorganization.
- Ongoing data monitoring and analysis.
- Analyze quarterly and yearly reports to examine trends and outcomes.
- By 2020 full implementation across L.A. Unified of Restorative Justice as an alternative to traditional school discipline.

Ongoing Training and Preparation



Restorative Justice Training Schedules for 2015-2016 SY and training completion status:

TYPES OF TRAINING FOR RESTORATIVE JUSTICE TIER I		NUMBER OF SCHOOLS TRAINED AS OF MARCH 2016
Day 1 -	Introduction to Restorative Justice	85 Trained
	Empathy and Team Building	
	Community Building Circle Training	
Day 2	Continuation of Community Building Circles	85 Trained
	Defusing Disruptive Behavior	

Tier I

- 5 Certificated staff per school site including principal
- 12 hours total of paid training
- Trainer - Selected RJ Advisers and RJ Teacher Advisers
- Training sites used – selected LD offices and school sites

Total number of schools scheduled to be trained - 147

TYPES OF TRAINING FOR RESTORATIVE JUSTICE TIER II/III		NUMBER OF SCHOOLS TRAINED AS OF MARCH 2016
Day 1	Review of Community Building Circle Circles	102 Trained
Day 2	Tier II - Harm Circles Tier III - Re-Entry	100 Trained

Tier II/III

- 2 Certificated staff per school site including principal
- 12 hours total of paid training
- Trainer – Creative Educational Consultants, Inc.
- Training sites used – selected LD offices and school sites

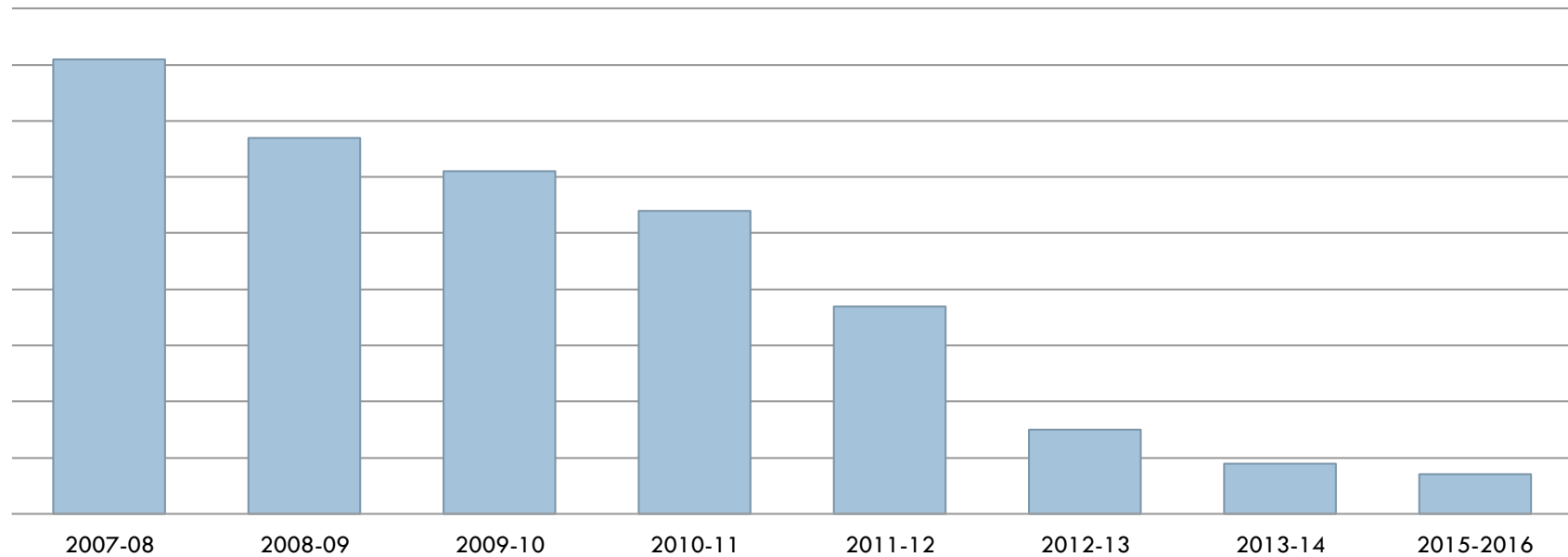
Total number of schools scheduled to be trained - 142 (schools trained in 2014-2015 SY for Tier I)



Identified Early Trends

6

Instructional Days Lost to Suspension

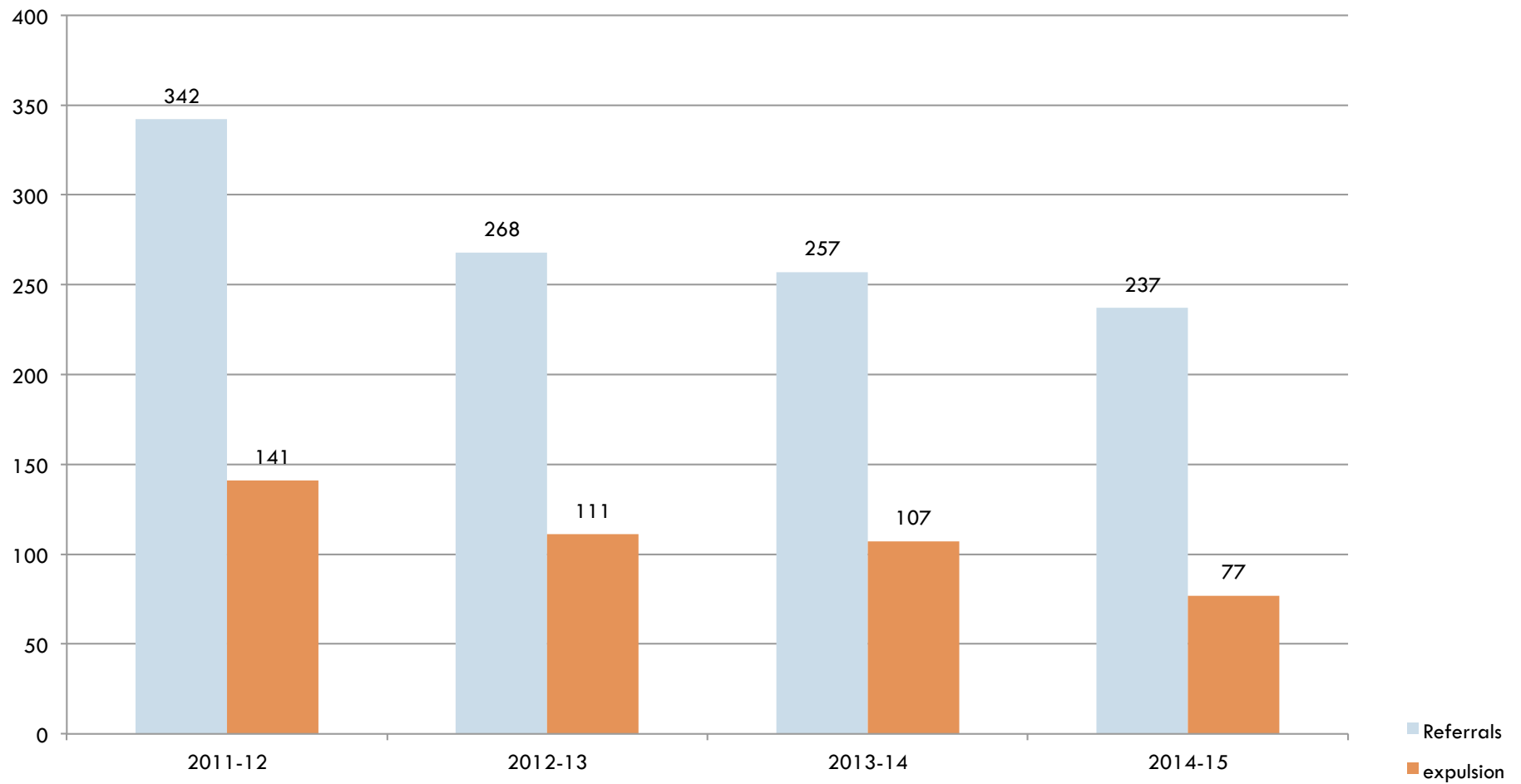


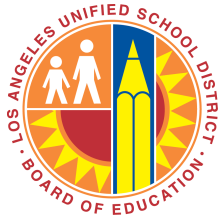
DESCRIPTION	2007-08	2008-09	2009-10	2010-11	2011-12	2012-13	2013-14	2014-2015
Instructional days lost to suspension	74,765	59,783	53,725	46,006	26,286	12,353	8,351	6,221



Expulsion Data

7





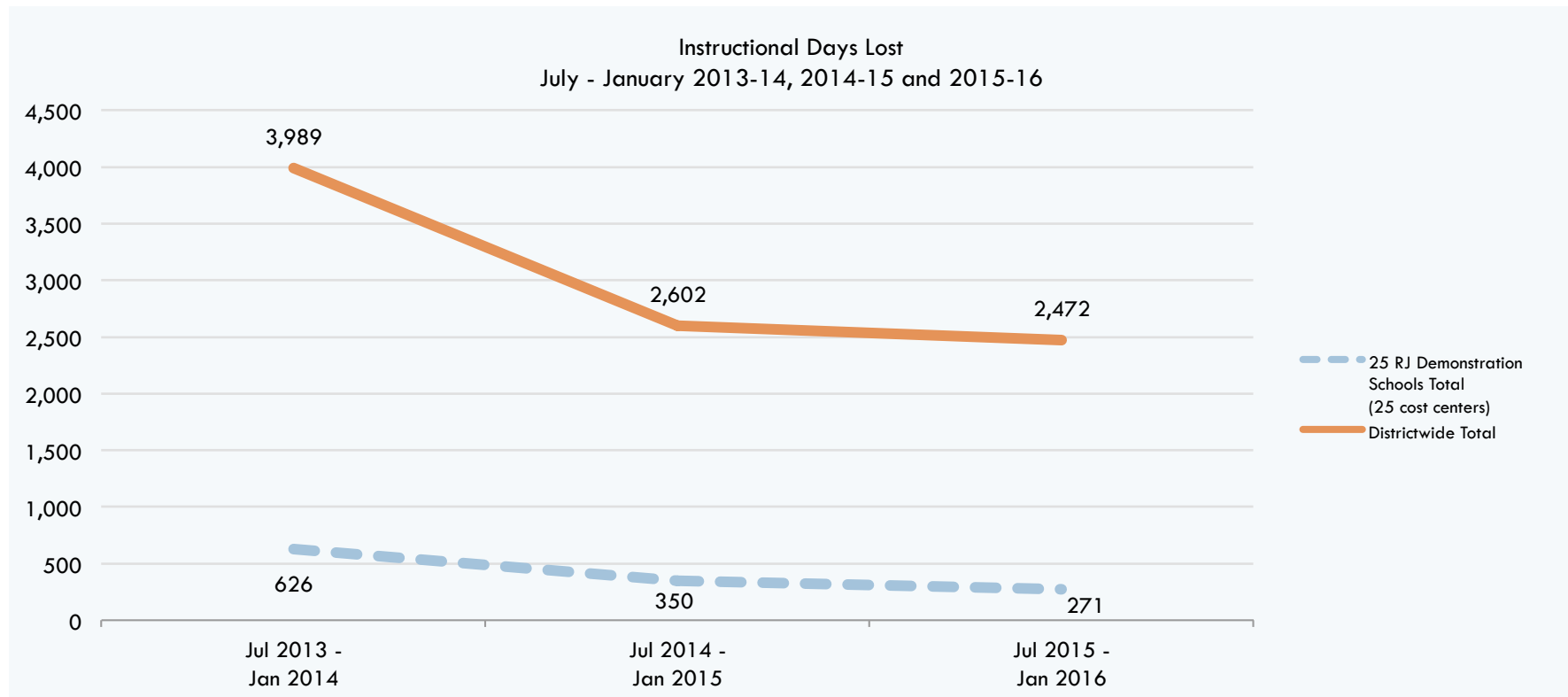
25 RESTORATIVE JUSTICE DEMONSTRATION SCHOOLS

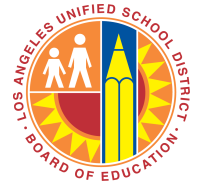
INSTRUCTIONAL DAYS LOST TO SUSPENSION DATA COMPARISON

For School Years 2013-2014; 2014-2015; and 2015-2016 (July - January only)

8

School Years	Jul 2013 - Jan 2014	Jul 2014 - Jan 2015	Jul 2015 - Jan 2016	July - Jan 2013-14 vs 2014-15 % Change	July - Jan 2014-15 vs 2015-16 % Change	July - Jan 2013-14 vs 2015-16 % Change
25 RJ Demonstration Schools Total	626	350	271	-44.09%	-22.57%	-56.71%
Districtwide Total	3,989	2,602	2,472	-34.77%	-5.00%	-38.03%





RESTORATIVE JUSTICE IN ACTION at University High School



Questions?