



STEWARDS OF THE PUBLIC TRUST: High Quality Charter School Oversight

Presented to Budget, Facilities, and Audit Committee
November 17, 2015

José Cole-Gutiérrez, Director
Charter Schools Division

LAUSD's Core Responsibilities as a Charter School Authorizer

- ❖ Charter School Authorization & Re-authorization
 - ❖ New Petitions
 - ❖ Renewal Petitions
 - ❖ Requests for Material Revision of Charter

- ❖ Charter School Oversight
 - Proactive Oversight
 - Responsive Oversight

- ❖ Proposition 39 Facilities Program

- ❖ Sharing Promising Practices

Number of LAUSD Charter Schools

- ❖ Total Number of LAUSD-Authorized Charter Schools: 274*
(Elementary: 111; Middle: 60; HS: 57; Span: 46)

- ❖ Affiliated Charter Schools: 53

- ❖ Independent Charter Schools: 221
 - ❖ Independent Charter Schools Operating on District Property: 80**
 - Proposition 39: 42
 - Conversion: 12
 - PSC Program: 16
 - Other: 12
 - ❖ Independent Charter Schools Operating on Private Site(s) Only: 194

*As of November 6, 2015

**These schools may also be operating on one or more private sites as well. Please also note that this category does not include one charter school authorized by the state that currently operates on a District facility pursuant to Proposition 39.

Key Oversight Priority Areas

- ❖ Health and Safety (collaborate with other City/County offices, i.e., LA Dept. of Building and Safety, etc.)
- ❖ High Quality Educational Programs for All Students
- ❖ Protection of Stakeholder Rights
 - Due Process
 - Access and Equity
- ❖ “Public” Aspect of Charter Public Schools
 - Transparency
 - Accountability (academic performance, finance, applicable compliance, etc.)

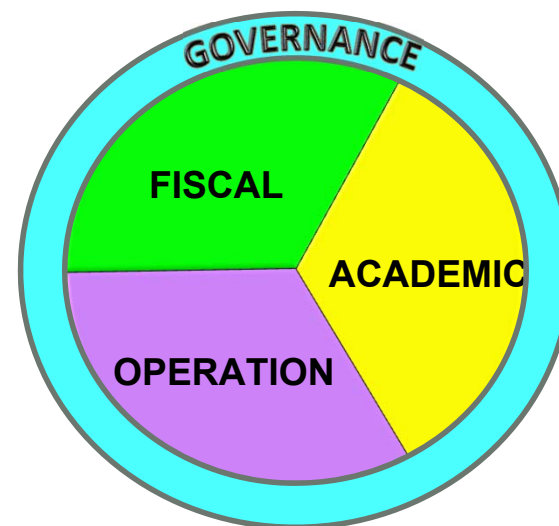
Key Components of CSD Charter School Oversight

- ❖ Proactive Oversight
 - Data Collection and Analysis (at least quarterly)
 - Annual Performance-Based Oversight Visits (plus follow up, as needed)
 - Annual Review of Audits and Financial Reports
 - Ongoing Review and Monitoring of Reporting Compliance
- ❖ Responsive Oversight
 - Stakeholder Questions, Concerns, and Claims
 - Fraud Hotline Reports and Public Agency Communications
 - Board Member and District Staff Inquiries
- ❖ Tiered Intervention
 - Informal Communications
 - Formal Notices to Cure and Notices of Concern
- ❖ Voluntary School Closure
- ❖ Revocation Recommendation
- ❖ Obtain and Share Promising Practices from Oversight

Annual Performance-Based Oversight Visits

The CSD teams gather, review and evaluate evidence of school performance in four main categories:

- Governance
- Student Achievement and Educational Performance
- Organizational Management, Programs, and Operations
- Fiscal Operations



Charter School Governance

Does the charter school's governing board have policies, systems, and procedures in place to ensure compliance with requirements and performance of its fiduciary duties related, but not limited to:

- ❖ Organizational Structure, Roles, and Responsibilities
- ❖ Brown Act
- ❖ Due Process
- ❖ Response to Stakeholders
- ❖ Conflicts of Interest
- ❖ Staff Clearances and Credentialing
- ❖ Evaluation of School/Organizational Leadership
- ❖ Data-Based Decision-Making
- ❖ Fiscal Oversight, Accountability, Insurance (including Local Control Accountability Plan)
- ❖ Appropriate Compliance Monitoring

Student Achievement and Educational Performance

To what extent does the charter school demonstrate student academic achievement and growth, as measured by:

- ❖ API Growth Targets for All Student Subgroups
- ❖ Schoolwide API and 3-Year Average API (and, prospectively all relevant data from the new CA Assessment of Student Performance and Progress, including Smarter Balanced Assessment results)
- ❖ Progress toward and achievement of metrics in a school's charter
- ❖ Similar Schools Rank
- ❖ Statewide Rank
- ❖ English Learner Reclassification Rate
- ❖ 4-year Cohort Graduation Rate [HS only]
- ❖ Internal Assessments and Other Measures
- ❖ Other metrics, as appropriate

Organizational Management, Programs, and Operations

Do the charter school's organizational management, programs, and operations fulfill the provisions of the charter and comply with legal and policy requirements related to:

- ❖ Health and Safety
- ❖ Standards-Based Instruction (Common Core)
- ❖ Meeting the Needs of All Students
- ❖ Implementation of Innovative Program Components
- ❖ Special Education
- ❖ School Climate and Student Discipline
- ❖ Stakeholder Communication and Engagement
- ❖ Evaluation of School Staff
- ❖ Staff Clearances and Credentialing
- ❖ Other areas, as appropriate

Fiscal Operations

Do the charter school's fiscal operations fulfill the provisions of the charter and comply with legal and policy requirements related to:

- ❖ Fiscal Condition
- ❖ Conflicts of Interest
- ❖ Audits
- ❖ Fiscal Policies and Procedures, including fiscal controls, segregation of duties, etc.
- ❖ Fiscal Reporting
- ❖ Other areas, as appropriate

Budget – Charter Schools Division

2015-16

Revenue – 1% Oversight Fee			\$8,868,269
Expenses			\$8,372,872
Included in expenses			
Staff with all Benefits*		\$6,580,194	
Operations (non-staff expenses)		\$ 294,000	
Other Departments		\$1,498,678	
Included in Other Departments			
Office of General Counsel	\$765,095		
Data And Accountability	\$240,883		
Accounting and Disbursements	\$286,647		
Enrollment and Attendance	\$206,053		

Staffing/Resources

- ❖ 47 full-time staff members – includes three vacancies we are working to fill and one substitute
 - Ratio of program oversight staff to school is about 1:22. About 1:40 for fiscal staff.
- ❖ CSD provided specific funding support to the Office of Inspector General to complete two in-depth forensic reviews requested in the past two years (approx. \$200K)
- ❖ * Planning to appropriately and prudently increase staff (and technology resources) to respond to increasing needs in oversight using funds carried over into this fiscal year (approx. \$2.8MM)
 - Plans include: Program staff to keep ratio of schools to about 1:15-20; fiscal staff to reduce ratio to about 1:25-30; Operations staff to assist the Local Districts and schools with co-location operational matters and other ongoing issues; staff to assist with processing board materials and ongoing performance management; fund special oversight projects, as needed.



CHARTER SCHOOLS DIVISION

Organization Chart

2015-2016

